

DESCRIPTION

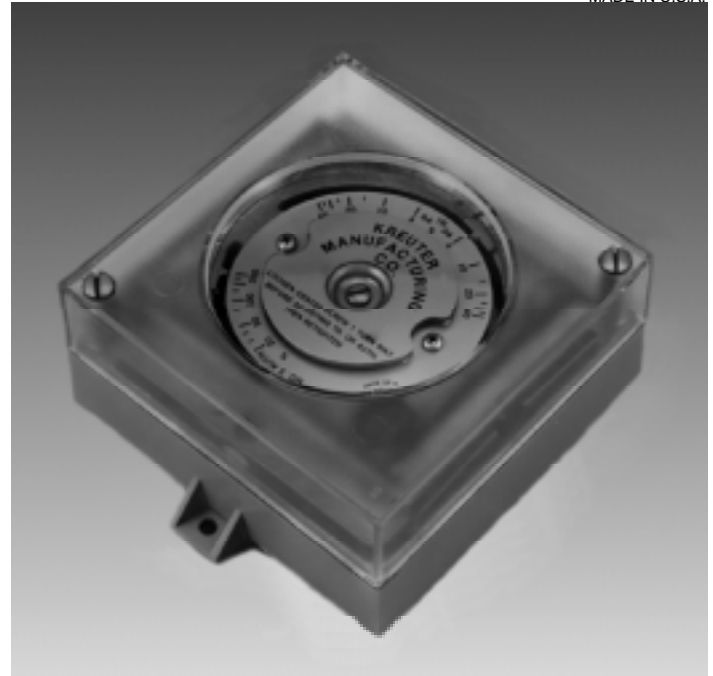
These receiver controllers are pneumatic proportional control devices. Use with pneumatic transmitters or any 3 to 15 psig pneumatic device, for controlling valves and actuators in HVAC systems.

Proportional band action, authority and setpoint are easily adjustable. Remote setpoint adjustment may be used if the application dictates.

With all the inputs and features included, it is particularly suitable for all control applications requiring a receiver controller, including "Low-Limit" applications.

SPECIFICATIONS

Pressure	
Supply	20 psig (138 kPa)
Maximum	30 psig all ports (207 kPa)
Air Consumption	43.2 scim maximum (11.8 mL/s)
Setpoint	1.75 psi (12 kPa)/rev adjustable
Throttling Range	4% to 40% adjustable
Action	Direct or reverse, adjustable
Authority	Adjustable 20% to 200% of primary signal input
Remote Setpoint Adjustment	+/-10% of primary input span, direct acting
Inputs	
Port "1"	Primary signal 3 to 15 psig (21 to 103 kPa)
Port "2"	Remote setpoint adjustment 3 to 15 psig
Port "3"	Secondary signal 3 to 15 psig
Output	Port "B" branch
Connections	3/16" (5 mm) nipples for 1/4" (6 mm) O.D. polyethylene tubing
Weight	21 ounces (595 grams)
Material	
Base	ABS
Levers, Flexures	Stainless steel
Diaphragms	Neoprene
Finish	Beige with clear cover
Ambient Limits	
Operating	40°F to 120°F (4°C to 49°C)
Shipping	-40°F to 140°F (-40°C to 60°C)



ORDERING

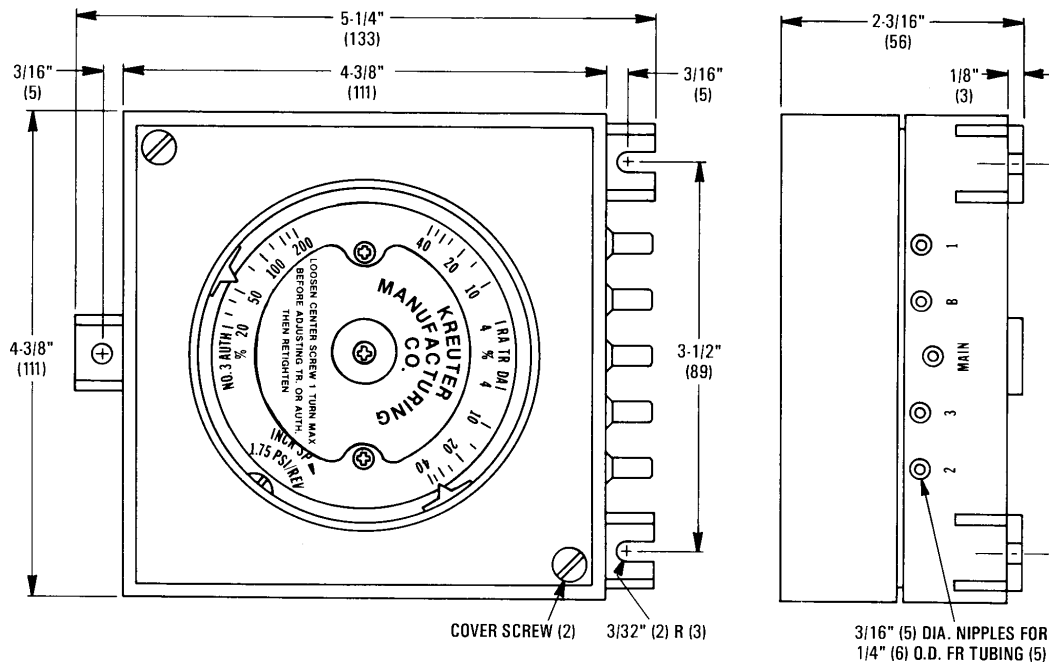
Specify: Model Number

Order From: Local KMC Controls dealer or,
KMC Controls, Kreuter Manufacturing Co., Inc.

Specifications and design are subject to change without notice.

DIMENSIONS

DIMENSIONS IN INCHES (MM)



INSTALLATION-CALIBRATION

The CCC-1001 has three mounting ears designed for quick and easy installation. It is not position sensitive, however, accuracy is greatest if it is calibrated in the same position that it will be mounted.

Input ports "1", "2", and "3" accept a 3 to 15 psig signal. Port "1" is primary, port "2" is remote setpoint adjust, and port "3" is secondary signal. Branch "B" port is output and port "M" is main air. With main air applied and ports "1", "2", and "3" connected to their respective input devices, set the desired % throttling range ("TR"). Next, set the desired % authority ("No. 3 AUTH"). If port "2" is not used, leave open. Adjust the setpoint screw until the desired branch output is reached.

For further instructions, refer to the installation sheet packed with each device.

Only use clean dry control air. No attempt should be made to use any other medium.

MAINTENANCE

No routine maintenance is required. Each component's design and material selection assures dependable long-term reliability and performance. Careful installation will also enhance long-term reliability and performance.