

DESCRIPTION

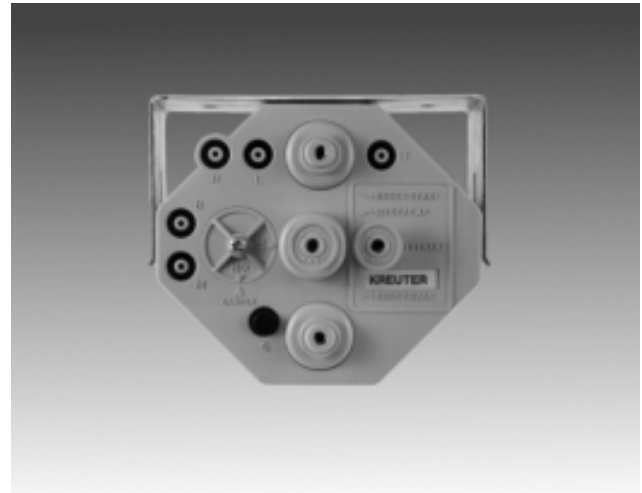
The CSC-3000 series Reset Volume Controllers are designed for use on variable air volume terminals units in HVAC systems.

It is a submaster air velocity controller whose velocity setpoint is reset between an adjustable minimum and maximum limit by a master controller, typically a room thermostat.

The CSC-3000 series are used for either direct or reverse acting reset for normally open or normally closed VAV terminal units. It has a factory set reset start point and reset span which can be field adjusted. The reset span is always constant no matter what minimum and maximum limits have been set.

SPECIFICATIONS

1" Range	
Differential Pressure	0 to 1" wg (249 Pa)
Minimum Setpoint	0 to 1" wg (249 Pa)
Maximum Setpoint	Minimum to 1" wg (249 Pa)
2" Range	
Differential Pressure	0 to 2" wg (498 Pa)
Minimum Setpoint	0 to 2" wg (498 Pa)
Maximum Setpoint	Minimum to 2" wg (498 Pa)
Reset Pressure Span	
Factory set @ 5 psig (35 kPa), field adjustable 0 to 10 psig (69 kPa)	
Reset Start Point	
Field adjustable 0 to 10 psig (69 kPa)	
Output Sensitivity	
1" Models	5 psi/.02" wg (35 kPa/5 Pa)
2" Models	5 psi/.04" wg (35 kPa/10 Pa)
Damper Action	
Factory set @ N.O., field adjustable for N.C. or N.O.	
Thermostat Action	
Direct or reverse action for heating or cooling	
Main Air Pressure	15 to 30 psig (103 to 207 kPa)
Maximum Signal Pressure	
6" wg (1493 Pa) applied to either port (H or L)	
Air Consumption	
28.8 scim @ 20 psig (7.87 mL/s @ 138 kPa)	
EXCEPT Model CSC-3025-10:	
46.1 scim @ 20 psig (12.59 mL/s @ 138 kPa)	
Ambient Limits	
Operating	40°F to 120°F (4°C to 49°C)
Shipping	-40° to 140°F (-40°C to 60°C)
Material	
ABS Cycolac + T, UL 94 Flame Class 94HB	
Weight	11 oz. (312 grams)



MODELS

CSC-3011-101"; 8 psig start; w/bracket
 CSC-3016-102"; 8 psig start; w/bracket
 CSC-3017-101"; 8 psig start; w/o bracket
 CSC-3021-101"; 3 psig start; w/bracket
 CSC-3023-101"; 10 psig start; w/bracket
 CSC-3025-102"; 8 psig start; w/bracket

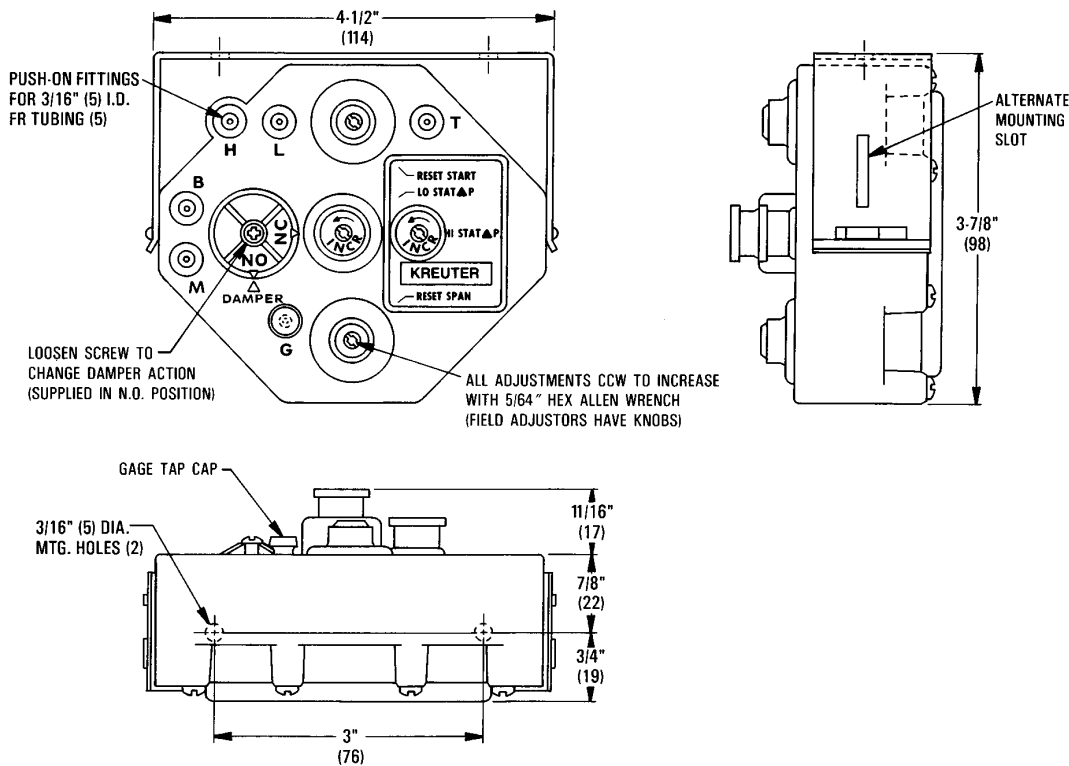
ORDERING

Specify: Model Number, accessory number if required
Order From: Local KMC Controls representative or,
 KMC Controls, Kreuter Manufacturing Co., Inc.

Specifications and design are subject to change without notice.

DIMENSIONS

DIMENSIONS IN INCHES (MM)



INSTALLATION-CALIBRATION

The CSC-3000 series may be mounted on a horizontal or vertical plane. Other angular positions are NOT recommended. Calibrate the device in the same plane as it will be mounted.

Damper action is factory set at "N.O.". To field select "N.C.", loosen damper selection switch screw and align "N.C." pointer with "DAMPER" pointer and tighten screw.

Thermostat reset start point is factory set. To field adjust, remove gauge tap cap at "G" and attach a 0 to 30 psi pressure gauge and observe pressure reading. Adjust thermostat pressure at "T" port to desired start point. Adjust "RESET START" until gauge pressure begins to increase slightly. Replace gauge tap cap.

Thermostat reset span is factory set at 5 psi. To field adjust reset span, remove gauge tap cap at "G" and attach a 0 to 30 psi pressure gauge. Adjust thermostat pressure at "T" port to 20 psi. Adjust "RESET SPAN" until gauge pressure is equal to the desired reset span. (This is total span pressure, not ending span pressure). Deviation from the factory set 5 psi reset span will effect the differential pressure range of the CSC-3000 series.

An increase or decrease of the reset span will directly or proportionally effect the differential pressure range. Replace gauge tap cap.

Normally open or normally closed damper with direct or reverse acting thermostat:

1. Adjust "LO STAT" to desired air flow with 0 psi at "T" port;
2. Adjust "HI STAT" to desired air flow with 20 psi at "T" port.

NOTE:

"LO STAT" is always calibrated first, with 0 psi on the "T" port. This air flow setting will be the desired minimum for DA/Cooling or RA/Heating applications, or maximum for RA/Cooling or DA/Heating applications.

"HI STAT" is always calibrated second, with 20 psi on the "T" port. This air flow setting will be the desired maximum for DA/Cooling or RA/Heating applications, or minimum for RA/Cooling or DA/Heating applications.

These devices should be supplied with clean, dry control air. No attempt should be made to use any other medium.

MAINTENANCE

No routine maintenance is required. Each component's design and material selection assures dependable long-term reliability and performance. Careful installation will also enhance long-term reliability and performance.