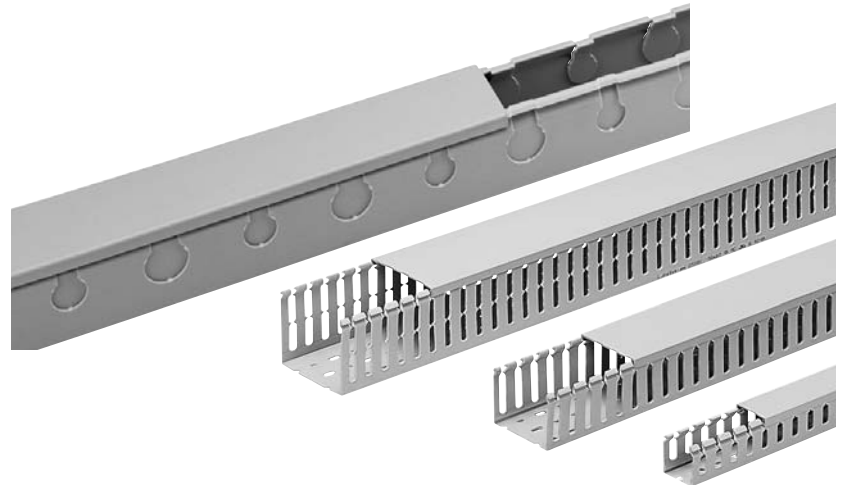


# ABB Wiring duct



## Description

ABB wiring ducts are now also available in the 100 mm height and in a choice of six different base sizes (25, 40, 60, 80, 100 and 150 mm). These new wiring ducts join the established designs (with heights between 17 and 80 mm), bringing to 28 the total size combinations offered, all available with 8 – 12 mm and 4 – 6 mm slots.

Flexible thermoplastic wiring ducts (available in seven sizes) are ideal for every situation in which wiring is subject to flexion or torsion.

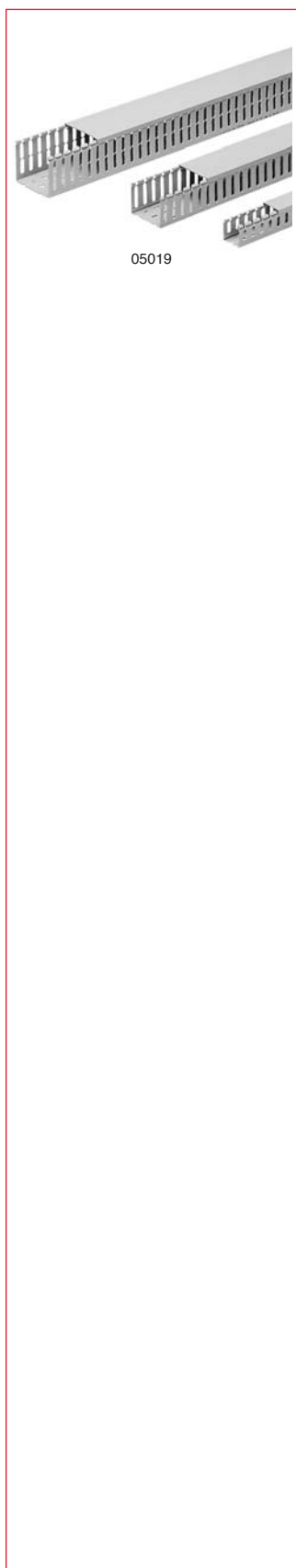
A new design of wiring ducts with circular knockouts in the sides to facilitate branch

connections using rigid and corrugated conduits has also been introduced for environments in which cables require greater protection against external agents (elevator rooms are a typical example).

The updated range is completed by installation accessories and tools: plastic rivets, wire stops, label tags, new wiring ducts bases, a new rivet gun and shears.

The 80 and 100 mm high versions feature cable holder moldings in the middle of the straight sections of the ribs.

## Wiring duct Standard; 8 – 12 mm slot



### Standard; 8 – 12 mm slot, gray

Dimensions W x H (mm)	Dimensions W x H (in)	Meters per package	Feet per package	Pieces per package <sup>①</sup>	Catalog number <sup>①②</sup>	List price per package	List price per 2M piece	List price per foot
25 x 40 40 x 40	1 x 1 1/2 1 1/2 x 1 1/2	48 30	157.5 98.5	24 15	05043 05045	<b>570.00</b> <b>397.50</b>	<b>23.75</b> <b>26.50</b>	<b>3.62</b> <b>4.04</b>
25 x 60 40 x 60 60 x 60	1 x 2 1/4 1 1/2 x 2 1/4 2 1/4 x 2 1/4	34 22 32	111.5 72 105	17 11 16	05063 05065 05067	<b>442.00</b> <b>319.00</b> <b>488.00</b>	<b>26.00</b> <b>29.00</b> <b>30.50</b>	<b>3.96</b> <b>4.42</b> <b>4.65</b>
25 x 80 40 x 80	1 x 3 1 1/2 x 3	28 36	92 118	14 18	05083 05085	<b>451.50</b> <b>634.50</b>	<b>32.25</b> <b>35.25</b>	<b>4.91</b> <b>5.37</b>

## Wiring duct

### Technical data

### Wire capacity, 18 - 750 AWG

#### 18 - 1 AWG

Gray 4/6 slot	Gray 8/12 slot	ABB wiring duct code		Nominal duct size (mm)	Nominal duct size (inches)	Usable areas (mm <sup>2</sup> )	Maximum number of wires according to AGW and cable section (mm <sup>2</sup> )										
		White 4/6 slot	White 8/12 slot				18 0.82	16 1.3	14 2.1	12 3.3	10 5.3	8 8.4	6 13.3	4 21.2	3 26.7	2 33.6	1 42.4
05143	05043	1SL5143A00	1SL5043A00	25X40	1X1 1/2	710	432	273	169	107	66	42	26	16	13	10	8
05145	05045	1SL5145A00	1SL5045A00	40x40	1 1/2x1 1/2	1260	768	484	300	190	118	75	47	29	23	18	14
05163	05063	1SL5163A00	1SL5063A00	25X60	1 X 2 1/4	1120	682	430	266	169	105	66	42	26	20	16	13
05165	05065	1SL5165A00	1SL5065A00	40X60	1 1/2X2 1/4	1970	1201	757	469	298	185	117	74	46	36	29	23
05167	05067	1SL5167A00	1SL5067A00	60X60	2 1/4X2 1/4	3060	1865	1176	728	463	288	182	115	72	57	45	36
05183	05083	1SL5183A00	1SL5083A00	25X80	1X3	1540	939	592	366	233	145	91	57	36	28	22	18
05185	05085	1SL5185A00	1SL5085A00	40X80	1 1/2X3	2670	1628	1026	635	404	251	158	100	62	50	39	31

#### 1/0 - 750 AWG

Gray 4/6 slot	Gray 8/12 slot	ABB wiring duct code		Nominal duct size (mm)	Nominal duct size (inches)	Usable areas (mm <sup>2</sup> )	Maximum number of wires according to AGW and cable section (mm <sup>2</sup> )											
		White 4/6 slot	White 8/12 slot				1/0 53.5	2/0 67.4	3/0 85	4/0 107.2	250 127	300 152	350 177	400 203	500 253	600 304	750 380	
05143	05043	1SL5143A00	1SL5043A00	25X40	1X1 1/2	710	6	5	4	3	2	2	2	1	1	1	0	
05145	05045	1SL5145A00	1SL5045A00	40x40	1 1/2x1 1/2	1260	11	9	7	5	4	4	3	3	2	2	1	
05163	05063	1SL5163A00	1SL5063A00	25X60	1 X 2 1/4	1120	10	8	6	5	4	3	3	2	2	1	1	
05165	05065	1SL5165A00	1SL5065A00	40X60	1 1/2X2 1/4	1970	18	14	11	9	7	6	5	4	3	3	2	
05167	05067	1SL5167A00	1SL5067A00	60X60	2 1/4X2 1/4	3060	28	22	18	14	12	10	8	7	6	5	4	
05183	05083	1SL5183A00	1SL5083A00	25X80	1X3	1540	14	11	9	7	6	5	4	3	3	2	2	
05185	05085	1SL5185A00	1SL5085A00	40X80	1 1/2X3	2670	24	19	15	12	10	8	7	6	5	4	3	

# Wiring duct

## Technical data

### Wire capacity, 800 - 1000 AWG



#### 800 - 1000 AWG

Gray 4/6 slot	Gray 8/12 slot	ABB wiring duct code		Nominal duct size (mm)	Nominal duct size (inches)	Usable areas (mm <sup>2</sup> )	Maximum number of wires according to AGW and cable section (mm <sup>2</sup> )	
		White 4/6 slot	White 8/12 slot				800 405	1000 508
05143	05043	1SL5143A00	1SL5043A00	25X40	1X1 1/2	710	0	0
05145	05045	1SL5145A00	1SL5045A00	40x40	1 1/2x1 1/2	1260	1	1
05163	05063	1SL5163A00	1SL5063A00	25X60	1 X 2 1/4	1120	1	1
05165	05065	1SL5165A00	1SL5065A00	40X60	1 1/2X2 1/4	1970	2	1
05167	05067	1SL5167A00	1SL5067A00	60X60	2 1/4X2 1/4	3060	3	3
05183	05083	1SL5183A00	1SL5083A00	25X80	1X3	1540	1	1
05185	05085	1SL5185A00	1SL5085A00	40X80	1 1/2X3	2670	3	2

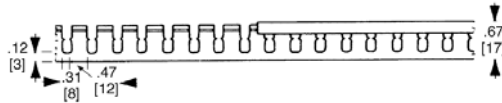
## Wiring duct Technical data

- Gray color — RAL 7030
- White color — RAL 9016
- Plastic insulating, shock-proof, self-extinguishing material in compliance with UL 94 VO Standard and resistant to abnormal heat and fire up to 960° (glow wire test) in compliance with IEC 695-2-1 Standard. UL File # E125800
- Minimum storage/transport temperature -5°C
- Minimum installation and usage temperature -15°C
- Maximum usage temperature +60°C.
- Resistance to acids, oils and greases
- No burr, rounded-off inner edges
- New rib profile makes it easy to open and close the cover and guarantees that it clips on more safely
- Designed to snap onto the Fix-O-rapid special accessory, suitable to be fastened both to DIN rail and base plate
- The ribs are cut using a special pressing process (rounding of the edges) producing wiring ducts completely free of burr and rough edges
- The dimensions and resilience of the ribs ensure repeated splaying during cabling
- Controlled splaying of sides to ensure a perfect seal of the cover in the vertical sections and at high temperatures
- Double trimming line, one at the base of the ribs so that they can be removed by bending them outwards, and one at the base of the lateral sides so that the edge can be cut when two wiring ducts are branched
- Cable holder moldings half-way up the straight section of the ribs in 80 and 100 mm high wiring ducts
- Cover can be opened without having to use a special tool
- Can be mounted on horizontal or vertical surfaces even when the cover is on the bottom
- Standard 2 meter length
- Industrial application

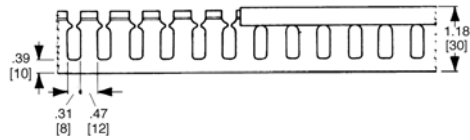
# Wiring duct Approximate dimensions

00.00 Inches  
00.00 [Millimeters]

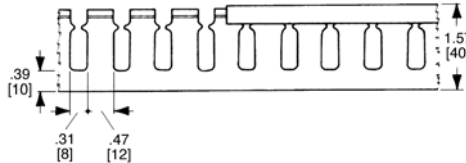
**.31 – .47" [8-12 mm] slot**  
**.87" [17 mm] height**



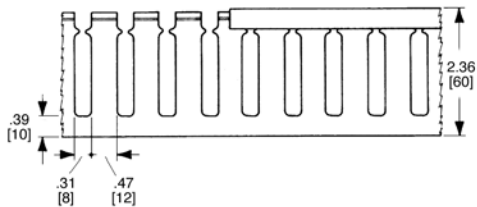
**1.18" [30 mm] height**



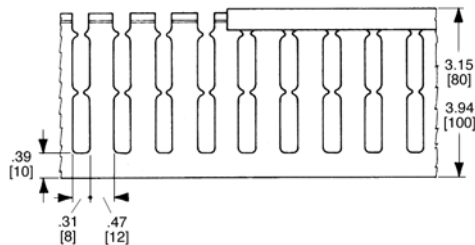
**1.57" [40 mm] height**



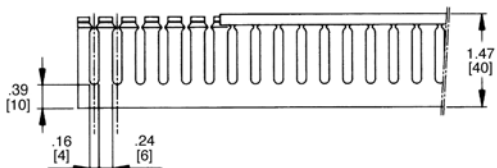
**2.36" [60 mm] height**



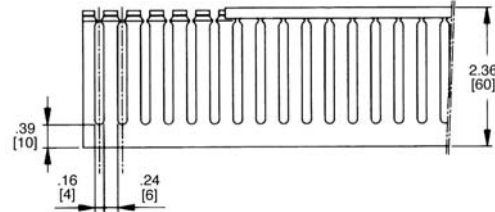
**3.15", 3.94" [80 mm, 100 mm] height**



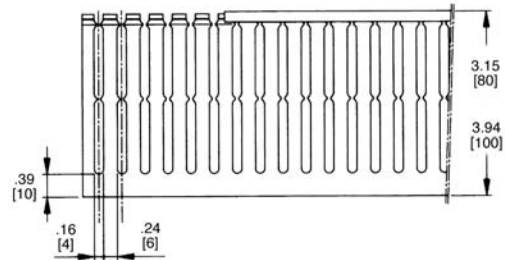
**.16 – .24" [4 – 6 mm] slot**  
**1.47" [40 mm] height**



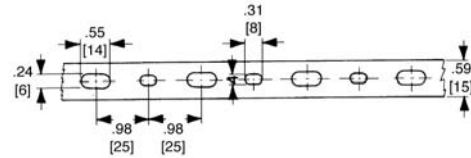
**2.36" [60 mm] height**



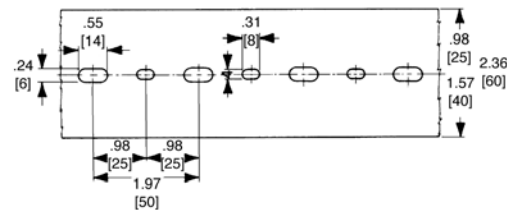
**3.15", 3.94" [80 mm, 100 mm] height**



**.16 – .24" [4 – 6 mm] & .31 – .47" [8 – 12 mm] spacing**  
**.59" [15 mm] width**



**.98", 1.57", 2.36" [25, 40, 60 mm] width**



**1.57", 1.97", 2.95" [80, 100, 150 mm] width**

